

Video Borescope/Wireless Inspection Camera

9mm camera diameter and 3.5" Color TFT LCD Wireless Monitor

With optional Wireless USB Video Receiver (BRD10) to stream live video to your PC and over your VOIP (Voice Over Internet Protocol) connection

Features:

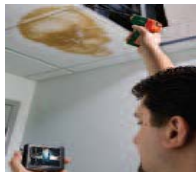
- Detachable wireless color display can be viewed from a remote location up to 32ft (10m) from measurement point
- 2GB microSD memory card (included) for capturing images (JPEG) or video (AVI) for viewing on your PC
- Captured video and still images with date/time stamp can be played back on the wireless monitor or your PC
- 9mm diameter camera head with 39" (1m) flexible gooseneck cable retains configured shape
- Video and images can also be transferred to your PC via the microSD card (with included SD adaptor) or USB cable (included) and viewed using Windows® Multimedia Player
- Menus in 10 languages: English, Chinese, German, French, Spanish, Portuguese, Italian, Japanese, Dutch, and Russian
- Mini water-proof (IP67) camera head for high resolution viewing
- Two bright LED lamps with dimmer to illuminate viewed object
- Glare-free close-up field of view
- Optional BR200-EXT extension cable available for increasing viewing depth; 19mm diameter connector and 37" (0.95m) cable length; maximum 2 extension cables can be connected to the borescope



Complete with 4 AA batteries, rechargeable display battery, microSD memory card with SD adaptor, USB cable, extension tools (mirror, hook, magnet), video interconnect cable, AC adaptor (100-240V, 50/60Hz), magnetic base stand, and hard case



Detachable wireless 3.5" color TFT LCD display can be viewed from a remote location up to 32ft (10m) from the measurement point.



Ideal Applications:
- Water Restoration
- HVAC and Refrigeration
- Electrical Inspection
- Automotive
- Pest control



BRD10 - Optional Wireless USB Video Receiver allows user to stream live video to a PC and also can be remotely viewed via VOIP connection

Specifications	
Camera	
Pixels	712 x 486 (NTSC)
Transmission Frequency	2.4GHz
Transmission Range	32ft (10m) unobstructed view
Viewing direction	Viewing Angle 45°
Focus distance from object	5.9" to 9.8" (15 to 25cm)
Shaft diameter	9mm
Working length	36" (0.9m)
Minimum bend radius	2.36" (60mm)
Handle Dimensions	7.3 x 5.7 x 1.6" (186 x 145 x 41mm)
Weight	18.7oz (530g)
Monitor	
LCD Screen Type	3.5" TFT
Pixels	320 x 240
Video Output Level 0.9 to	1.3V@75Ω
Frame Rate	10, 15, 20, 25, 30FPS
Video Resolution	960 x 240 (avi format)
Image Resolution	640x 480 (jpeg format)
Monitor Dimensions	3.9 x 2.7 x 1" (100 x 70 x 25mm)
Operating/Charge Time	1.5 hours/3 hours
Weight	4.9oz (140g)

Ordering Information:

- BR250.....Flexible Video Borescope (9mm diameter/1m cable)
 BRD10.....Wireless USB Video Receiver
 BR200-EXT.....Borescope Extension Cable for BR250 (19mm diameter/0.9m cable)
 BR-9CAM.....Replacement 9mm Borescope Camera Head with 1m Cable
 BR-9CAM-2M.....Replacement 9mm Borescope Camera Head with 2m Cable
 BR-9CAM-5M.....Replacement 9mm Borescope Camera Head with 5m Cable
 BR-17CAM.....Replacement 17mm Borescope Camera Head with 1m Cable
 BR-17CAM-2M.....Replacement 17mm Borescope Camera Head with 2m Cable
 BR-17CAM-5M.....Replacement 17mm Borescope Camera Head with 5m Cable
 UA100-BR.....Universal AC Adaptor (100-240Vm 50/60Hz) for BR200 and BR250
 (Note: Recommended up to two BR200-EXT connected to BR250 to maintain resolution)

สนใจติดต่อ บริษัท เอเมท จำกัด โกสุมร่วมใจ 31 ซอย 37 แยก 2 ดอนเมือง กทม 10210

โทร.02-5038900 , 02-5038929, แฟกซ์ : 02-9810181 , Email : sales@amet.net , Web: www.amet.net

